



**POWER SOLUTION  
SPECIALISTS PROVIDING  
SALES, SUPPORT & STOCK  
FOR WESTERN CANADA**

[www.proteksc.com](http://www.proteksc.com)

# CUSTOM VFD PACKAGES WITH 1200+VFD'S IN STOCK

## CUSTOM VFD PACKAGES

- Typical lead time 2-4 weeks, can be expedited if required
- Software & designs for all types of applications (pumps, fans, compressors, irrigation, etc.)

## VARIABLE FREQUENCY DRIVES-VFD's

- 1-600HP in stock
- 230V, 480V, 600V available



## CONTACTORS / OVERLOADS & BREAKERS

- Extensive Inventory is available



CSA 22.2 3286, UL508A | NEMA12 OR NEMA 3R | FAST DELIVERY | FULLY CUSTOMIZABLE

## MOTORS



- Small HP low voltage up to high HP
- MV (0.25-25,000HP)



## SOFT STARTERS



- WEG/Lovato/Motortronics
- 230V, 480V, 600V available
- 300HP typically on the shelf



## MOTOR STARTERS



- NEMA3R units in stock 1-2 week lead
- time for non-stocked items
- Smart starters available
- Can produce fully customizable packages



## TRANSFORMERS



- Oil filled transformers
- Up to 10 MVA, 44kV & 350 BIL



# MOTOR CONTROL: MCC & MCP NOW AVAILABLE

## MOTOR CONTROL



### Industry leading deliveries

- Reduced footprint & costs
- 208, 480 & 600V
- Available up to 6000A
- Standard 65kA bus bracing available up to 100kA
- Ambient Temp -10°C to +40 °C
- Indoor NEMA 12 / IP52
- Enclosure Rating Configurable for top & bottom cable entry & exit
- Textured powder coated RAL7035 exterior finish
- Tin Plated Copper Bus Bar

DELIVERY QUICK AS  
**8-20**  
WEEKS

## ABOUT PROTEK

Our primary objective is to always deliver long-term value for our customers by leveraging the strength of our partners, the dedication and expertise of our people, our stock, and the robustness of our operations.

Our promise is to always do what is right in order to exceed expectations and deliver for our customers — every time.



AB: 403.668.6869 | NE BC: 250.277.2552 | SK: 306.985.0024 | [sales@proteksc.com](mailto:sales@proteksc.com)



**LOCALLY MANUFACTURED  
CUSTOM SWITCHGEAR  
SALES, SUPPORT AND SOLUTIONS**

[www.proteksc.com](http://www.proteksc.com)

## MOTOR CONTROL

**PSC1000-PDS Industrial Motor Control Panel & Motor Control Centers provides customizable turnkey solutions resulting in industry leading deliveries, reduced field installation times and overall cost savings.**

### Key Features

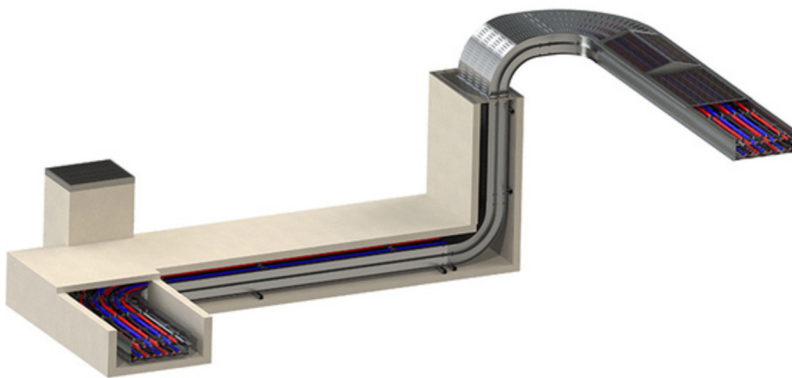
- Systems are designed and built to CSA C22. 2 #254 & UL 845A with a SPE-1000 field approval assessment/inspection.
- Reduced footprint
- Reduced costs
- Optional Fully Withdrawable Buckets up to 600A
- Available up to 6000A horizontal bus
- Configurable for top & bottom cable entry & exit
- 208, 480, & 600V
- Standard 65kA bus bracing, available up to 100Ka
- Indoor NEMA 12 / IP52 Enclosure Rating
- Textured powder coated RAL7035 exterior finish
- Tin Plated Copper Bus Bar
- Ambient Temp -10°C to +40°C
- Locally manufactured using WEG components, Noark breakers, and Tekpan enclosure



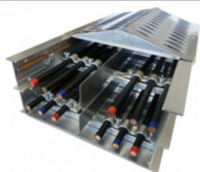
### Industry leading deliveries

- Small MCP utilizing existing stock can range from 4-8 weeks
- Large MCP lead time can range from 14-20 weeks
- MCC lead time can range from 14-20 weeks

**MAXIAMP**  
UNDERGROUND



**MAXIAMP® is a uniquely designed cable bus feeder system package which includes technically selected power cables, a well ventilated aluminum or steel enclosure, all associated hardware, entry fittings, and cable terminations (including an insulation shield and conductor lugs); tailored to be an effective and highly engineered product. This unique lug-to-lug solution simplifies and streamlines the project managers' task tremendously.**



### METAL ENCLOSURE

Special CSA certified multi-level enclosure provided a combination of straight, fixed, and adjustable bend sections consisting of at least 4 I-beams and specially vented top and bottom covers.



### INSULATED POWER CONDUCTORS

Every MAXIAMP system includes specially engineered and CSA certified, unarmored Ethylene Propylene Rubber (EPR) insulated power conductors. These cables bend easily, simplifying handling and installation.



### CABLE CLAMPING

Provide cable spacing such that free air rating is maintained. Positioning the cables into a trefoil configuration. Brace and secure the cables under a fault condition.



### ENTRY PLATES

Pre-sized and pre-drilled metal plates including pre-assemble watertight cable entrance fittings, gaskets and all required connecting hardware is included for all circuits where required.