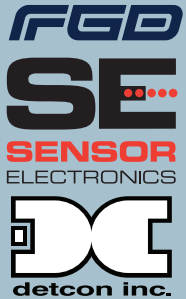




**FIRE & GAS DETECTION
SPECIALISTS PROVIDING
SALES, SUPPORT & STOCK
FOR WESTERN CANADA**

www.proteksc.com

FIXED FLAME & GAS DETECTION



- Single & Multi-channel Controllers + Separation
- Infrared LEL Gas Detector No Calibration Required
- Toxic, O2, H2S Universal Gas Detector Platforms +30 Sensors Available
- Open Path Combustible Multi Gas Detector
- Triple IR Flame Detector + HD Video Capture
- UV/IR Flame Detector + Hydrogen Detection + HD Video Capture



CSA C1Z1 & C1Z2 | FAST RESPONSE | LOW MAINTENANCE | HIGH IMMUNITY | LOW TEMP RATED

EMISSIONS MONITORING [CEMS]



- C1D1 Methane Gas Optical Imaging
- Wide Area Coverage
- Gas Concentration



HORNS & BEACONS



- XP/GP Visual Signals
- XP/GP Audible Devices
- XP/GP Outdoor Warning
- XP/GP Public Address



BURNER FLAME MONITORING & XP HEATERS



- Flame Scanners
- Burner Control Units
- Flame Monitoring
- Explosion-proof Heaters



HEAT & SMOKE DETECTORS



- Fixed Temp Detectors
- Rate-of-Rise Detectors
- Beam Smoke Detectors
- Spot Smoke Detectors



FEATURED SAFETY PRODUCT

PROTEK-UDM

Single or Multi-Channel Universal Controller



- **Remote Parameter Configuration**
Full Diagnostic Information
- **Mimics Gas Sensor Display**
Remote Calibration of Sensor
- **Any Sensor Combination**
4-20mA Output Signal

Pass through 4-20mA Signal Technology & Certified for C1D1 & C1D2 NO-SEALS REQUIRED Easily replace obsoleted 'NSM' systems

ABOUT PROTEK

Our primary objective is to always deliver long-term value for our customers by leveraging the strength of our partners, the dedication and expertise of our people, our stock, and the robustness of our operations.

Our promise is to always do what is right in order to exceed expectations and deliver for our customers — everytime.





**HAZARDOUS LOCATION
LED LIGHTING EXPERTS,
PROVIDING SALES AND SUPPORT
WITH MILLIONS IN STOCK**

www.proteksc.com

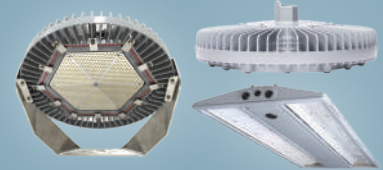
HIGH PERFORMANCE INDUSTRIAL/HAZARDOUS LED LUMINARIES

Dialight

**LED
FLOODLIGHT**



**LED
HIGHBAY**



**LED
LINEAR**



**LED
AREALIGHT**



CSA C1Z1 & C1Z2 | 10YR WARRANTY | ENERGY EFFICIENT | SIMPLE INSTALLATION | FASTEST ROI

COMMERCIAL LED LIGHTING

natural^{led}
ETLIN-DANIELS

- Light Industrial
- Area Lights
- Work Lights
- Flood Lights



INDUSTRIAL POLES

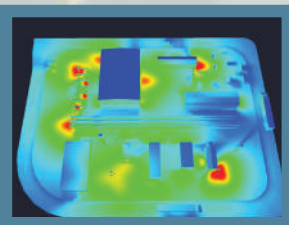
Swivelpole™

NOVA POLE

- Guardrail Mounted
- Structure Mounted
- Vibration Dampening
- Free Standing

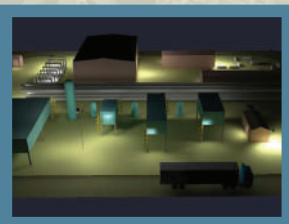


COMPLIMENTARY LIGHTING STUDIES



Expert Consultation for Selection & Design Criteria within Hazardous Locations

- **3D Renderings of Facility System**
Work with our team to produce accurate site simulations
- **Increased Safety & Cost Saving**
Eliminate risk and ensure the Installation meets requirements
- **Maximize Energy Savings**
Reduce system overlap with lower power consumption



ABOUT PROTEK

Our primary objective is to always deliver long-term value for our customers by leveraging the strength of our partners, the dedication and expertise of our people, our stock, and the robustness of our operations.

Our promise is to always do what is right in order to exceed expectations and deliver for our customers — everytime.

