

CM-100SF Accelerometer

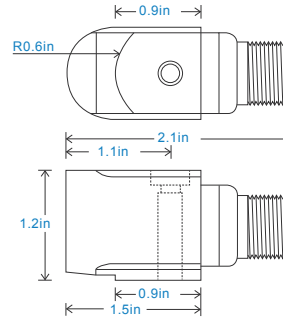
AC acceleration output via 2 Pin MS Connector

Key Features

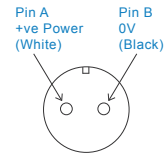
- For use with data collector
- Side entry for easy access
- Filtered output

Industries

Building services, Pulp and Paper,
Mining, Metals, Utilities, Automotive,
Water, Pharmaceutical



Connection Details



Technical Performance

Mounted Base Resonance	see 'How To Order' table (nominal)
Sensitivity	see: 'How To Order' table $\pm 10\%$ Nominal 80Hz at 72°F
Frequency Response	90cpm (1.5Hz) to 600kcpm (10kHz) $\pm 5\%$ 30cpm (0.5Hz) to 720kcpm (12kHz) $\pm 10\%$ 12cpm (0.2Hz) to 900kcpm (15kHz) $\pm 3\text{dB}$
Isolation	Base isolated
Range	see: 'How To Order' table
Transverse Sensitivity	Less than 5%

Mechanical

Case Material	Stainless Steel
Sensing Element/Construction	PZT/Compression
Mounting Torque	5.9ft. lbs
Mounting Bolt provided	see: 'How To Order' table x 1.2in long
Weight	6.5 oz. (nominal)
Shielded Cable Assembly	see: www.sec-america.com for options
Connector	CM-AA004 - non-booted CM-AA053 or CM-0054 - booted
Mounting Threads	see: 'How To Order' table

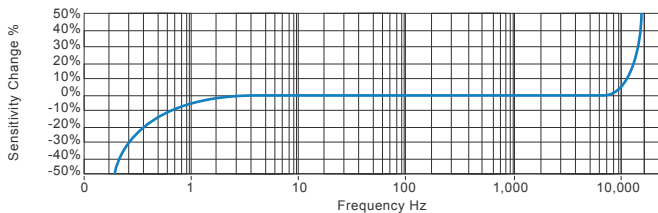
Electrical

Electrical Noise	0.1mg max
Current Range	0.5mA to 8mA
Bias Voltage	10 - 12 Volts DC
Settling Time	2 seconds
Output Impedance	200 Ohms max.
Case Isolation	$>10^8$ Ohms at 500 Volts

Environmental

Operating Temperature Range	-67 to 284°F
Sealing	IP68
Maximum Shock	5000g
EMC	EN61326-1:2013

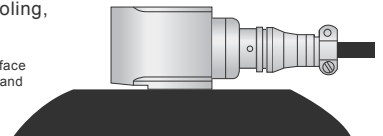
Typical Frequency Response (at 100mV/g)



Applications

Fans, Motors, Pumps, Compressors,
Centrifuges, Conveyors, Air Handlers,
Gearboxes, Rolls, Dryers, Presses,
Cooling, VAC, Spindles, Machine Tooling,
Process Equipment

Vibration sensor should be firmly fixed to a flat surface
(spot face surface may be needed to be produced and
cable anchored to sensor body.)



How To Order

Product Prefix CM - Case Mounted		Product Series 100 - Industrial Vibration Sensor				Cable Length (if integral cable) UXX - length specified in feet									
C	M	1	0	0	S	F	X	X	X	X	X	X	X	X	X
Extra Options (if required)		Sensitivity		Range		Resonant Frequency		Cable/Connector		Mounting Threads					
F - Filtered		010 - 10mV/g		±800g		1,620kcpm (27kHz)		01 - PUR		02 - 1/4-28" UNF Male					
L - 316L Stainless Steel		030 - 30mV/g		±250g		1,500kcpm (25kHz)		02 - Braided		06 - M6 x 1mm Male					
RT - Temperature Output PT100		050 - 50mV/g		±160g		1,380kcpm (23kHz)		07 - Silicon		08 - M8 x 1.25mm Male					
S - 90° Side Exit		100 - 100mV/g		±80g		1,260kcpm (21kHz)		08 - Flame Retardant							
T - Temperature Output		250 - 250mV/g		±32g		1,140kcpm (19kHz)		50 - 2 Pin MS							
Y - 5% tolerance on sensitivity		500 - 500mV/g		±16g		1,020kcpm (17kHz)		54 - M12							



www.sec-america.com
info@sec-america.com

We reserve the right to alter the specification of this product without prior notice

TS137.4

