



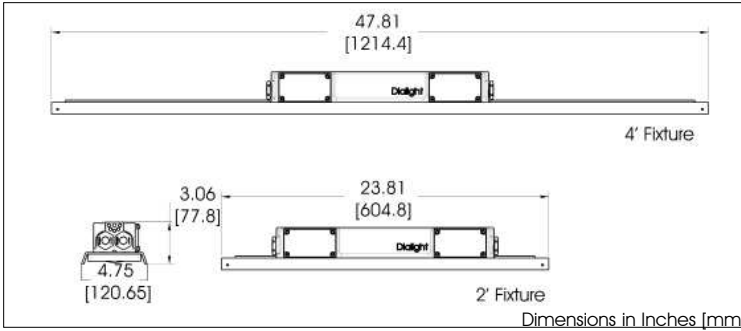
Patent Pending

SafeSite® LED Linear Fixture - UL 844
for Indoor and Outdoor Hazardous Locations



SafeSite® LED Linear Fixture

Low Profile - Class I, Div. 2 / Class II



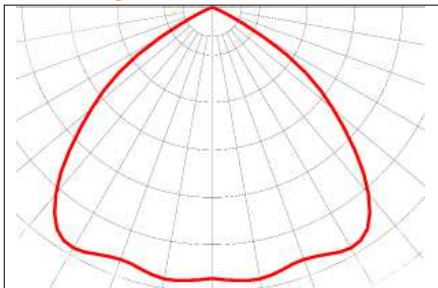
Certifications & Ratings

- Class I Div. 2 Groups A, B, C, D
- Class II Div. 1 Groups E, F, G
- Class II Div. 2 Groups F, G
- Class III
- UL 1598/A
- UL 844
- UL 8750
- CSA C22.2 No.137
- CSA C22.2 No.250
- IP66/67
- NEMA 4X

Features & Benefits

- 5 year full performance warranty
- L70 rated for >100,000 hours @ 25°C
- DLC Listed (80 CRI CW & NW models only)
- Low profile housing for limited space applications
- Dual NPT entries for in / out wiring
- Thru wiring capability
- Instant on/off operation
- Resistant to water, salt, dust & vibration
- Resistant up to 20 PSI of hose directed water
- Universal input (100-277V AC), 50/60Hz
- Mercury free
- Temperature compensation technology for longer life
- Factory sealed
- Integrated wiring box

Light Distribution



Application

Dialight's SafeSite® LED linear fixture replaces HID and fluorescent lighting fixtures in industrial applications and hazardous location applications.

The SafeSite LED Linear fixture's rugged solid state design makes it highly resistant to shock and vibration. Its fully gasketed IP66/67 rated enclosure makes it suitable for dust & wet locations, its 1598A rating guarantees added protection from salt water spray. The SafeSite LED Linear's superior design allows for wiring and mounting versatility and ease of installation for many lighting applications.

Mechanical Information

Fixture Weight:	4' - 10 lbs (4.53 kg) 2' - 7 lbs (3.18 kg)
Shipping Weight:	4' - 11 lbs (4.99 kg) 2' - 8 lbs (3.63 kg)
Mounting:	(4) 3/4" NPT openings Optional swivel bracket - LPXW4 Optional low profile bracket - LPXW4LP

Electrical Specifications

Operating Voltage:	100 - 277V AC 50/60Hz
Power Consumption:	See ordering information
Operating Temp:	-40°F to +149°F (-40°C to +65°C)
Harmonics:	IEC 61000-3-2
Noise Requirements/ EMC:	FCC Title 47, Subpart B, Section 15, class A device. RF Immunity; 10V/m, 80MHz-1GHz
Surge Protection	EN 61000-4-5 4 kV line to line 4 kV line to ground
THD:	< 20%
Power Factor:	> 0.9

Construction

Finish:	Superior dual coat finish Sealed polyester topcoat Chemical-resistant epoxy primer
----------------	--

Lens:	Polycarbonate
--------------	---------------

Photometric Information

CRI:	75, 80
CCT:	5000K (cool white) 4000K (neutral white)
IES Files:	Available at www.dialight.com

All values typical unless otherwise stated
All lumen values are typical (tolerance +/- 10%)

Temperature Ratings

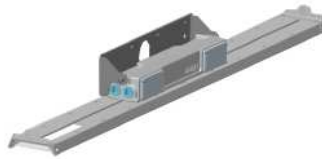
Ambient Temperature Range T4A Temperature Code	Ambient Temperature Range T5 Temperature Code
-40°F to +149°F (-40°C to +65°C)	-40°F to +113°F (-40°C to +45°C)

Mounting Options

LPXW4LP



Side Mount - LPXW4



Top Mount - LPXW4



SafeSite® LED Linear Fixture

Class I Div. 2 Ordering Information

Part Number	Length	Type	CRI	CID1	CID2	CIID1	CIID2	CIII	Voltage	Lens	CCT	Fixture Lumens	Watt	LPW	Optical Pattern
LPD3C4M2P	4'	Low Profile	75		•				100-277V AC	Clear	5000K (cool white)	7,250	66	110	circular
LPD3C4H2D	4'	Low Profile	75		•				100-277V AC	Textured	5000K (cool white)	6,900	66	105	circular
LPD3C4H2W	4'	Low Profile	75		•				100-277V AC	Diffused	5000K (cool white)	6,700	66	102	circular
LPD3B4M2P	4'	Low Profile	80		•				100-277V AC	Clear	5000K (cool white)	6,500	66	98	circular
LPD3B4H2D	4'	Low Profile	80		•				100-277V AC	Textured	5000K (cool white)	6,200	66	94	circular
LPD3B4H2W	4'	Low Profile	80		•				100-277V AC	Diffused	5000K (cool white)	6,000	66	91	circular
LPD3C4D2P	2'	Low Profile	75		•				100-277V AC	Clear	5000K (cool white)	3,600	33	109	circular
LPD3C4B2D	2'	Low Profile	75		•				100-277V AC	Textured	5000K (cool white)	3,400	33	103	circular
LPD3C4B2W	2'	Low Profile	75		•				100-277V AC	Diffused	5000K (cool white)	3,300	33	100	circular
LPD3B4D2P	2'	Low Profile	80		•				100-277V AC	Clear	5000K (cool white)	3,200	33	97	circular
LPD3B4B2D	2'	Low Profile	80		•				100-277V AC	Textured	5000K (cool white)	3,000	33	91	circular
LPD3B4B2W	2'	Low Profile	80		•				100-277V AC	Diffused	5000K (cool white)	2,900	33	88	circular

Class II Ordering Information

Part Number	Length	Type	CRI	CID1	CID2	CIID1	CIID2	CIII	Voltage	Lens	CCT	Fixture Lumens	Watt	LPW	Optical Pattern
LPF3C4M2P	4'	Low Profile	75			E / F / G	F / G	•	100 - 277V AC	Clear	5000K (cool white)	7,000	66	106	circular
LPF3C4H2D	4'	Low Profile	75			E / F / G	F / G	•	100 - 277V AC	Diffused	5000K (cool white)	6,600	66	100	circular
LPF3B4M2P	4'	Low Profile	80			E / F / G	F / G	•	100 - 277V AC	Clear	5000K (cool white)	6,300	66	95	circular
LPF3B4H2D	4'	Low Profile	80			E / F / G	F / G	•	100 - 277V AC	Diffused	5000K (cool white)	6,000	66	91	circular
LPF3C4D2P	2'	Low Profile	75			E / F / G	F / G	•	100 - 277V AC	Clear	5000K (cool white)	3,500	33	106	circular
LPF3C4B2D	2'	Low Profile	75			E / F / G	F / G	•	100 - 277V AC	Diffused	5000K (cool white)	3,300	33	100	circular
LPF3B4D2P	2'	Low Profile	80			E / F / G	F / G	•	100 - 277V AC	Clear	5000K (cool white)	3,100	33	94	circular
LPF3B4B2D	2'	Low Profile	80			E / F / G	F / G	•	100 - 277V AC	Diffused	5000K (cool white)	2,900	33	88	circular

Notes:

*Part numbers listed in the above table are cool white. For neutral white models replace the 5th character with **N**. Ex. LSD3**C**4MEP becomes LSD3**N**4MEP





*450 Lumens in Battery Backup mode

*All lumen values are typical (tolerance +/- 10%)

*See application note on page 3 regarding "sustained" and "maintained" battery modes

For Dialight's complete list of DLC qualified products, please click this link: www.dialight.com/DLC

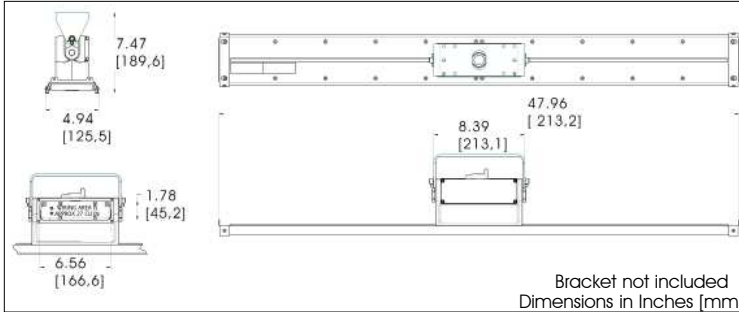
Low Profile Models - Class I, Div. 2 / Class II

	Part Number	Material	Description	Kit Includes
	LPXW4	316 Stainless Steel	Mounting bracket Can be angled at 0°, 30°, 45°, 60° & 90°	Mounting bracket Mounting hardware
	LPXW4LP	316 Stainless Steel	Low profile mounting bracket Can be angled at 0° and 15°	Mounting bracket Mounting hardware
	LTXENDCAPKIT	304 Stainless Steel	Chain mount and secondary retention bracket	2 Brackets Mounting hardware
	LTXSAFEKIT	304 Stainless Steel	Safety Cable Kit for secondary retention	2 brackets 2 53" Safety cables Mounting hardware



SafeSite® LED Linear Fixture

Top Conduit Mount- Class I, Div. 2 / Class II



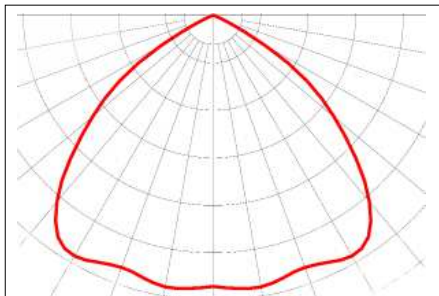
Certifications & Ratings

- Class I Div. 2 Groups A, B, C, D
- Class II Div. 1 Groups E, F, G
- Class II Div. 2 Groups F, G
- Class III
- UL 1598/A
- UL 844
- UL 8750
- CSA C22.2 No.137
- CSA C22.2 No.250
- IP66
- NEMA 4X

Features & Benefits

- 5 year full performance warranty
- L70 rated for >100,000 hours @ 25°C
- DLC Listed (80 CRI CW & NW models only)
- Instant on/off operation
- Resistant to water, salt, dust & vibration
- Vibration tested to UL 844 for 35 hours @ 2,000 CPM
- Resistant up to 20 PSI of hose directed water
- Universal input (100-277V AC), 50/60Hz
- Mercury free
- Temperature compensation technology for longer life
- Factory sealed
- Integrated wiring box

Light Distribution



Application

The first of its kind, Dialight's SafeSite® LED linear fixture replaces HID and fluorescent lighting fixtures in industrial applications and hazardous location applications.

The SafeSite LED Linear fixture's rugged solid state design makes it highly resistant to shock and vibration. Its fully gasketed IP66 rated enclosure makes it suitable for dust & wet locations, its 1598A rating guarantees added protection from salt water spray. The SafeSite LED Linear's superior design allows for mounting versatility and ease of installation for many lighting applications.

Mechanical Information

Fixture Weight:	4' - 11 lbs (4.99 kg) 2' - 10 lbs (4.53 kg)
Shipping Weight:	4' - 13 lbs (5.90 kg) 2' - 12 lbs (5.44 kg)
Mounting:	(3) 3/4" NPT openings Optional swivel bracket - LTXW4 Optional low profile bracket - LTXW4LP

Electrical Specifications

Operating Voltage:	100 - 277V AC 50/60Hz
Power Consumption:	See ordering information
Operating Temp:	-40°F to +149°F (-40°C to +65°C)
Harmonics:	IEC 61000-3-2
Noise Requirements/ EMC:	FCC Title 47, Subpart B, Section 15, class A device. RF Immunity; 10V/m, 80MHz-1GHz
Surge Protection	EN 61000-4-5 4 kV line to line 4 kV line to ground
THD:	< 20%
Power Factor:	> 0.9

Construction

Finish: Superior dual coat finish
Sealed polyester topcoat
Chemical-resistant epoxy primer

Lens: Polycarbonate

Photometric Information

CRI:	75,80
CCT:	5000K (cool white) 4000K (neutral white)
IES Files:	Available at www.dialight.com

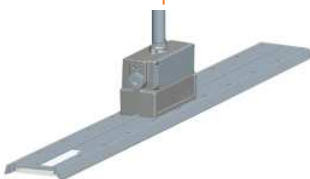
All values typical unless otherwise stated
All lumen values are typical (tolerance +/- 10%)

Temperature Ratings

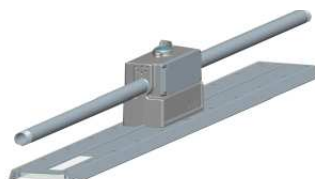
Ambient Temperature Range T4A Temperature Code	Ambient Temperature Range T5 Temperature Code
-40°F to +149°F (-40°C to +65°C)	-40°F to +113°F (-40°C to +45°C)

Mounting Options

Conduit Top Mount



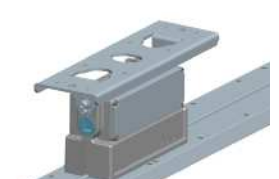
Conduit Side Mount



LTXW4



LTXW4LP



SafeSite® LED Linear Fixture

Class I Div. 2 Ordering Information

Part Number	Length	Type	CRI	CID1	CID2	CIID1	CIID2	CIII	Voltage	Lens	CCT	Fixture Lumens	Watt	LPW	Optical Pattern
LTD3C4M2P	4'	Top Conduit	75		•				100-277V AC	Clear	5000K (cool white)	7,250	66	110	circular
LTD3C4H2D	4'	Top Conduit	75		•				100-277V AC	Textured	5000K (cool white)	6,900	66	105	circular
LTD3C4H2W	4'	Top Conduit	75		•				100-277V AC	Diffused	5000K (cool white)	6,700	66	102	circular
LTD3B4M2P	4'	Top Conduit	80		•				100-277V AC	Clear	5000K (cool white)	6,500	66	98	circular
LTD3B4H2D	4'	Top Conduit	80		•				100-277V AC	Textured	5000K (cool white)	6,200	66	94	circular
LTD3B4H2W	4'	Top Conduit	80		•				100-277V AC	Diffused	5000K (cool white)	6,000	66	91	circular
LTD3C4D2P	2'	Top Conduit	75		•				100-277V AC	Clear	5000K (cool white)	3,600	33	109	circular
LTD3C4B2D	2'	Top Conduit	75		•				100-277V AC	Textured	5000K (cool white)	3,400	33	103	circular
LTD3C4B2W	2'	Top Conduit	75		•				100-277V AC	Diffused	5000K (cool white)	3,300	33	100	circular
LTD3B4D2P	2'	Top Conduit	80		•				100-277V AC	Clear	5000K (cool white)	3,200	33	97	circular
LTD3B4B2D	2'	Top Conduit	80		•				100-277V AC	Textured	5000K (cool white)	3,000	33	91	circular
LTD3B4B2W	2'	Top Conduit	80		•				100-277V AC	Diffused	5000K (cool white)	2,900	33	88	circular

Class II Ordering Information





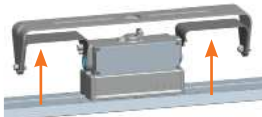
Part Number	Length	Type	CRI	CID1	CID2	CIID1	CIID2	CIII	Voltage	Lens	CCT	Fixture Lumens	Watt	LPW	Optical Pattern
LTF3C4M2P	4'	Top Conduit	75			E / F / G	F / G	•	100 - 277V AC	Clear	5000K (cool white)	7,000	66	106	circular
LTF3C4H2D	4'	Top Conduit	75			E / F / G	F / G	•	100 - 277V AC	Diffused	5000K (cool white)	6,600	66	100	circular
LTF3B4M2P	4'	Top Conduit	80			E / F / G	F / G	•	100 - 277V AC	Clear	5000K (cool white)	6,300	66	95	circular
LTF3B4H2D	4'	Top Conduit	80			E / F / G	F / G	•	100 - 277V AC	Diffused	5000K (cool white)	6,000	66	91	circular
LTF3C4D2P	2'	Top Conduit	75			E / F / G	F / G	•	100 - 277V AC	Clear	5000K (cool white)	3,500	33	106	circular
LTF3C4B2D	2'	Top Conduit	75			E / F / G	F / G	•	100 - 277V AC	Diffused	5000K (cool white)	3,300	33	100	circular
LTF3B4D2P	2'	Top Conduit	80			E / F / G	F / G	•	100 - 277V AC	Clear	5000K (cool white)	3,100	33	94	circular
LTF3B4B2D	2'	Top Conduit	80			E / F / G	F / G	•	100 - 277V AC	Diffused	5000K (cool white)	2,900	33	88	circular

Notes:

*Part numbers listed in the above table are cool white. For neutral white models replace the 5th character with **N**. Ex. LTF3C4D2P becomes LTF3N4D2P

For Dialight's complete list of DLC qualified products, please click this link: www.dialight.com/DLC

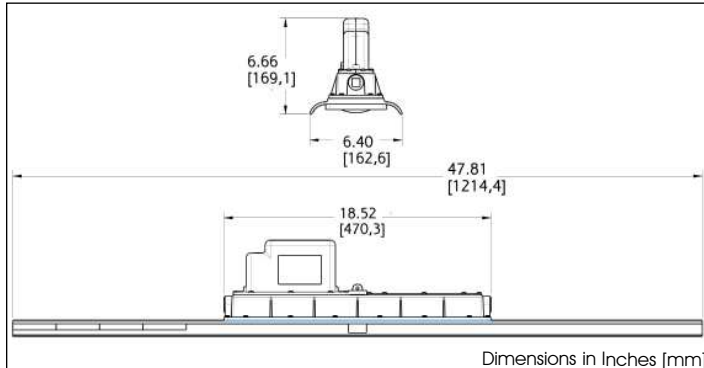
Top Conduit Mount Models - Class I, Div. 2 / Class II

	Part Number	Material	Description	Kit Includes
	LTXW4LP	5052 Aluminum	Low profile mounting bracket Can be angled at 0° and 15°	Mounting bracket Mounting hardware
	LTXW4	6061 Aluminum	Mounting bracket Can be angled at 0°, 30°, 45°, 60° & 90°	Mounting bracket Mounting hardware
	LTXENDCAPKIT	304 Stainless Steel	Chain mount and secondary retention bracket	2 Brackets Mounting hardware
	LTXSAFEKIT	304 Stainless Steel	Safety Cable Kit for secondary retention	2 brackets 2 53" Safety cables Mounting hardware
	LTXLSXW4	6061 Aluminum	Retrofit bracket adapter (used to connect LTM model fixtures to an existing LSXW4 bracket)	2 Bracket adapters Mounting hardware



SafeSite® LED Linear Fixture

Battery Backup - Class I, Div. 2 / Class II



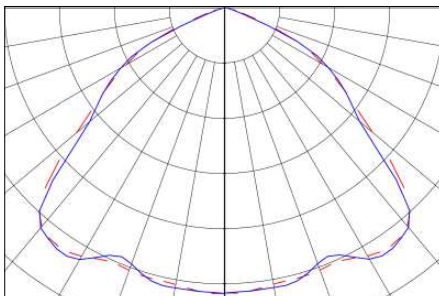
Certifications

- Class I, Division 2, Groups A, B, C, D
- Class II, Division 1, Groups E, F, G
- Class II, Division 2, Groups F, G
- Class III
- UL1598/A
- UL 844
- UL 924
- CSA C22.2 #250.0
- CSA C22.2 No.137
- IP66
- NEMA 4X

Features & Benefits

- 5 year full performance warranty (excluding batteries)
- L70 rated for >100,000 hours @ 25°C
- 450 lumens in battery backup mode consistent throughout life of battery
- Low power consumption
- Battery status indication light
- Instant on/off operation
- Superior color rendition index compared to HPS, LPS, MV
- Mercury free
- Resistant to shock and vibration
- Temperature compensation technology for longer life

Light Distribution



Application:

Dialight's SafeSite® LED linear fixture replaces HID and fluorescent lighting fixtures in industrial and hazardous applications. The SafeSite® LED Linear fixture's rugged solid state design makes it highly resistant to shock and vibration. Its fully gasketed IP66 rated enclosure makes it suitable for dusty & wet locations. The SafeSite LED Linear's superior design allows for mounting versatility and ease of installation for many lighting applications.

This fixture is offered in sustained and maintained configurations. Sustained has a single AC input and battery backup mode is entered upon any loss of power. Fixture cannot be turned off without entering battery backup mode. Maintained has two AC inputs. The fixture can be turned on and off via AC-1 and Fixture only enters battery backup mode when AC-2 is lost or low.

Mechanical Information

Fixture Weight:	18.0 lbs (8.16 kg)
Shipping Weight:	21.0 lbs (9.53 kg)
Mounting:	(1) Threaded 3/4" NPT Side (2) Threaded 3/4" NPT Ends

Electrical specifications:

Operating Voltage:	100-277V AC 50/60 Hz
Power Consumption:	85W
Operating Temp:	-20°F to +149°F (-20°C to +65°C)
Battery:	3.6V 10Ah NiMH
Expected Battery Life:	4 years
Battery Duration:	>3 hours
Harmonics:	IEC 61000-3-2
Noise Requirements/ EMC:	FCC Title 47, Subpart B, Section 15, class A device. RF Immunity; 10V/m, 80MHz-1GHz
Surge Protection	EN 61000-4-5 1 kV line to line, 2 kV line to ground
THD:	< 20%
Power Factor:	> 0.9

Construction

Finish:	Superior dual coat finish Sealed polyester topcoat Chemical-resistant epoxy primer
Lens:	Polycarbonate

Photometric Information

CRI:	75
CCT:	5000K (cool white)
IES Files:	available at www.dialight.com

All values typical unless otherwise state
All lumen values are typical (tolerance +/- 10%)

Temperature Ratings

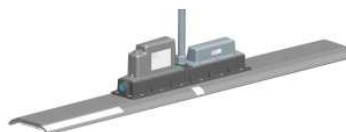
Ambient Temperature Range T4A Temperature Code	Ambient Temperature Range T5 Temperature Code
-20°F to +149°F (-20°C to +65°C)	-20°F to +113°F (-20°C to +45°C)

Mounting Options

In-line Conduit Mount



Overhead Conduit Mount



LSXW4



SafeSite® LED Linear Fixture

Class I Div. 2 Ordering Information

Part Number	Length	Type	CRI	CID1	CID2	CIID1	CIID2	CIII	Voltage	Lens	CCT	Fixture Lumens	Watt	LPW
LSD3C4MEP	4'	Sustained	75		•		•		100 - 277V AC	Clear	5000K (cool white)	7,000	85	85
LSD3C4MNP	4'	Maintained	75		•		•		100 - 277V AC	Clear	5000K (cool white)	7,000	85	85

Class II Ordering Information

Part Number	Length	Type	CRI	CID1	CID2	CIID1	CIID2	CIII	Voltage	Lens	CCT	Fixture Lumens	Watt	LPW
LSF3C4MEP	4'	Sustained	75			E / F / G	F / G	•	100 - 277V AC	Clear	5000K (cool white)	7,000	85	85
LSF3C4MNP	4'	Maintained	75			E / F / G	F / G	•	100 - 277V AC	Clear	5000K (cool white)	7,000	85	85

Notes:

¹Part numbers listed in the above table are cool white. For neutral white models replace the 5th character with **N**. Ex. LSF3**C**4D2P becomes LSF3**N**4D2P

²450 Lumens in Battery Backup mode




³Expect a 10% reduction in Lumens for 80 CRI minimum fixtures

⁴All lumen values are typical (tolerance +/- 10%)

⁵See application note on page 6 regarding "sustained" and "maintained" battery modes

For Dialight's complete list of DLC qualified products, please click this link: www.dialight.com/DLC

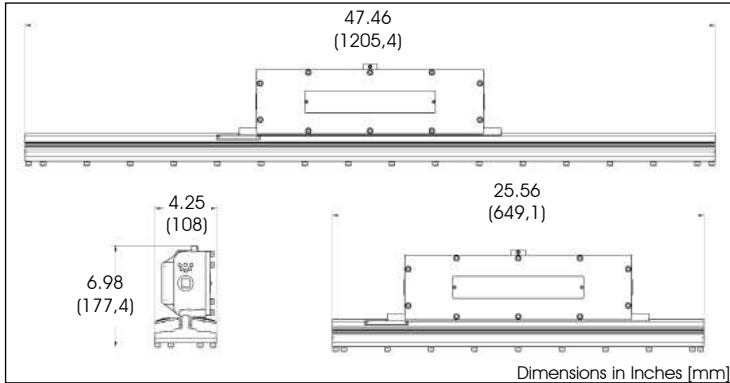
Battery Back up Models - Class I, Div. 2 / Class II

	Part Number	Material	Description	Kit Includes
	LSXW4	6061 Aluminum	Mounting bracket Can be angled at 0°, 30°, 45°, 60° & 90°	Mounting bracket Mounting hardware
	LSXENDCAPKIT	304 Stainless Steel	Chain mount brackets	2 Mounting brackets Mounting hardware
	HZXSAFEKIT	316 Stainless Steel	Safety Cable Kit	2 Eyelets 2 53" Safety cables Mounting hardware



SafeSite® LED Linear Fixture

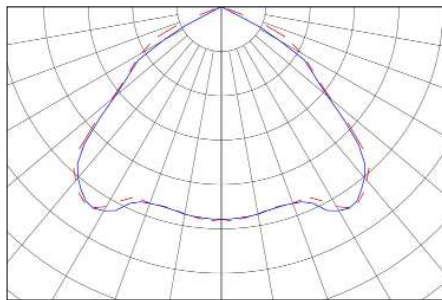
Class I, Div. 1



Certifications

- Class I, Div 1 Groups C, D
- UL 844
- UL1598
- CSA 22.2 No.137
- UL 8750
- ABS Design Assessed: # 12-HS942957-PDA
- IP66
- NEMA 4X

Light Distribution



Application

The first of its kind, the Dialight SafeSite® LED linear luminaire was designed specifically to replace HID and fluorescent lighting fixtures in industrial and hazardous location applications. The SafeSite LED Linear fixture's rugged solid state design makes it highly resistant to shock and vibration, while its superior design allows for increased mounting versatility and ease of installation.

Mechanical Information

Fixture Weight:	4' - 26.0 lbs (11.79 kg) 2' - 17.5 lbs (7.94 kg)
Shipping Weight:	4' - 28.0 lbs (12.70 kg) 2' - 19.5 lbs (8.85 kg)
Mounting:	(1) Threaded 3/4" NPT Side (2) Threaded 3/4" NPT Ends

Electrical specifications:

Operating Voltage:	100 - 277V AC 50/60Hz or 347 - 480V AC 50/60Hz
Power Consumption:	See ordering information
Operating Temp:	-40°F to +149°F (-40°C to +65°C)
Harmonics:	IEC 61000-3-2
Noise Requirements/ EMC:	FCC Title 47, Subpart B, Section 15, class A device. RF Immunity; 10V/m, 80MHz-1GHz
Surge Protection	EN 61000-4-5 4 kV line to line 4 kV line to ground
THD:	< 20%
Power Factor:	> 0.9

Construction

Finish:	Superior dual coat finish Sealed polyester topcoat Chemical-resistant epoxy primer
---------	--

Lens:	Glass
-------	-------

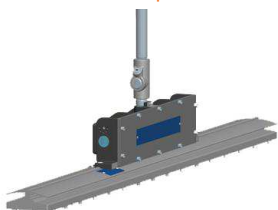
Photometric Information

CRI:	75
CCT:	5000K Cool White
IES Files:	Available upon request

All values typical unless otherwise state
All lumen values are typical (tolerance +/- 10%)

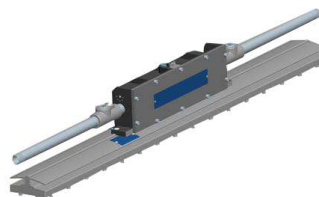
Temperature Ratings	
LSC3C4M3GEX (4ft) Ambient Temperature Range T4a Temperature Code	LSC3C4D3GEX (2ft) Ambient Temperature Range T5 Temperature Code
-40°F to +149°F (-40°C to +65°C)	-40°F to +149°F (-40°C to +65°C)

Conduit Top Mount

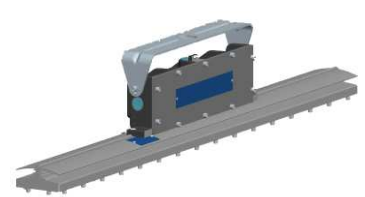


Mounting Options

Conduit Side Mount



LSXW5



SafeSite® LED Linear Fixture

Class I Div. 1 Ordering Information



Part Number	Length	Voltage	Lens	Fixture Lumens	Watt	Lumens Per Watt
Class I, Div 1						
LSC3C4M3GEX	4'	100 - 277V AC	Clear	7,000	66	106
LSC3C5M3GEX	4'	347 - 480V AC	Clear	7,250	78	93
LSC3C4D3GEX	2'	100 - 277V AC	Clear	3,500	33	106
LSC3C5D3GEX	2'	347 - 480V AC	Clear	3,600	39	92

Notes:

Part numbers listed in the above table are cool white. For neutral white models replace the 5th character with **N**. Ex. LSC3C4D3GEX becomes LSC3N4D3GEX

For Dialight's complete list of DLC qualified products, please click this link: www.dialight.com/DLC

Standard Models - Class I, Div 1

	Part Number	Material	Description	Kit Includes
	LSXW5	6061 Aluminum	Mounting bracket Can be angled at 0°, 30°, 45°, 60° & 90°	Mounting bracket Mounting hardware
	HZXSAFEKIT	316 Stainless Steel	Safety Cable Kit	2 Eyelets 2 53" Safety cables Mounting hardware

Dialight reserves the right to make changes at any time in order to supply the best product possible. The most current version of this document will always be available at: www.dialight.com/Assets/Brochures_And_Catalogs/Illumination/MDTFSLINX001.pdf. Warranty Statement: EXCEPT FOR THE WARRANTY EXPRESSLY PROVIDED FOR [HEREIN/ABOVE/BELOW], DIALIGHT DISCLAIMS ANY AND ALL OTHER WARRANTIES, EXPRESS OR IMPLIED, INCLUDING, WITHOUT LIMITATION, ANY WARRANTIES OF MERCHANTABILITY, FITNESS FOR A PARTICULAR PURPOSE, TITLE, AND NONINFRINGEMENT.

SafeSite® LED Linear Fixture - UL 844
for Indoor and Outdoor Hazardous Locations

